

**TREAD PATTERN**





## Sun Rubber Industry Sdn. Bhd.

Sun Rubber Industry Sdn Bhd, (Sun Rubber) has been Malaysia's leading Rubber Compound manufacturer for more than 5 decades. Sun Rubber the subsidiary of Sunrich Integrated Sdn Bhd is a member of Ecowise Holdings Ltd in Singapore. Sun Rubber committed to provide an excellent standard of services, highest quality of products and reasonable price to customers which have resulted in consistent growth over the years.

Sun Rubber is specialized in the production of International-grade precured tread liners, cushion gum, gum cords, sidewall veneer, camelback compound, masterbatch and customised compound as well as speciality or technical rubber compound for automotive, mining and other industries. Our products and services are distributed to well over 30 countries spanning across the Asia Pacific, the Middle East, Europe and Africa.

Our sustained growth is the evidence of our ability to facilitate the operational; efficiency and business growth of our customers through customised speciality compounds. Investments in R&D combined with industry experience enable us to operate and advance in a demanding market where customers demand customization and satisfaction.

Sun Rubber has well-structured quality management systems and was among the first in the industry to be certified in accordance to the ISO 9000 standard. Sun Rubber achieved ISO 9001:2015 Certification in 2018.

**Customised Rubber Compound / Strip**



**Precured Tread Liner**



**Camelback Rubber**



**Gumcord / Repair Rope**



**Cushion Gum / Sidewall**



**Calendar Sheet**



## RIB

Pattern	TYRE POSITION			APPLICATION				
	Drive	Trailer	All Position	Highway	Regional	Off Road	Urban	Winter
BR	✓			✓	✓			
CR	✓	✓	✓	✓	✓			
ES	✓	✓	✓		✓			
HK	✓	✓	✓	✓	✓		✓	
JH		✓		✓	✓			
PCHW	✓	✓	✓					
RH	✓	✓		✓				
RP	✓	✓	✓	✓	✓		✓	
S10	✓				✓		✓	
S150		✓		✓				
S85	✓	✓	✓	✓				
S88	✓	✓	✓	✓	✓			
SH	✓	✓	✓	✓	✓			
SQH	✓	✓	✓	✓	✓		✓	
SQH (Round Shoulder)	✓	✓	✓	✓	✓		✓	
SR34	✓		✓		✓		✓	
SRE103		✓		✓				
SZE2	✓	✓		✓				
XZY	✓	✓		✓	✓		✓	

## SEMI

Pattern	Drive	Trailer	All Position	Highway	Regional	Off Road	Urban	Winter
DS	✓		✓			✓		
DT	✓		✓		✓	✓		
EG	✓				✓			
HM	✓				✓		✓	
KT	✓				✓			
M810E	✓		✓		✓	✓		
M810	✓		✓		✓	✓		
M880	✓				✓	✓		
MIX757	✓				✓			
S119	✓			✓	✓			
S33	✓		✓				✓	
S580	✓				✓		✓	
S722	✓				✓	✓		
SDE	✓				✓			
SDY3	✓				✓	✓		
SGP	✓							✓
SM	✓			✓	✓			
ST386	✓			✓	✓			
SUN32	✓		✓		✓	✓		
W965	✓							✓

## LUG

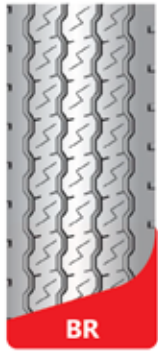
Pattern	Drive	Trailer	All Position	Highway	Regional	Off Road	Urban	Winter
CB	✓		✓			✓		
CXG	✓		✓			✓		
LL/NLL	✓					✓		
LT						✓		
RB	✓					✓		
RL	✓					✓		
SHF	✓		✓			✓		
SR45						✓		
TK	✓					✓		
WHL					✓		✓	

TYRE POSITION **D** Drive **T** Trailer **A** All Position APPLICATION **H** Highway **R** Regional **O** Off Road **U** Urban **W** Winter

Allow ± 3% commercial tolerance. All technical specifications are approximate only.



# PRECURED TREAD PATTERN



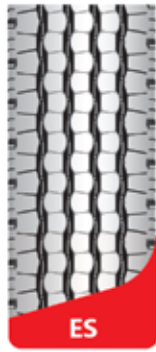
BR

D H R



CR

D T A H R U



ES

D T A R U



HK

D T A H R U



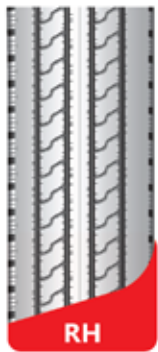
JH

T H R



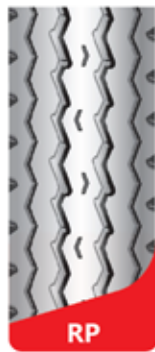
PCHW

D T A H



RH

D T H



RP

D T A H R U



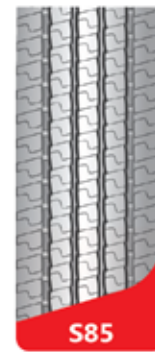
S10

D R U



S150

T H



S85

D T A H



S88

D T A H R U



SH

D T A H R U



SQH

D T A H R U



SQH  
(Round Shoulder)

D T A H R U



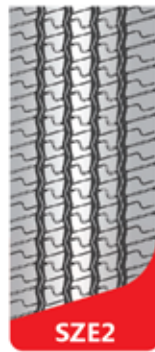
SR34

D A R U



SRE103

T H



SZE2

D T H



XZY

D T H R U



DS

D A O



DT

D A R O



HM

D R U



KT

D R



M810

D A R O

TYRE POSITION **D** Drive **T** Trailer **A** All Position APPLICATION **H** Highway **R** Regional **O** Off Road **U** Urban **W** Winter



# PRECURED TREAD PATTERN



M810E

**D** **A** **R** **O**



M880

**D** **R** **O**



MIX757

**D** **R**



S119

**D** **H** **R**



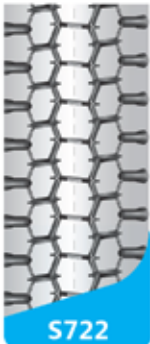
S33

**D** **A** **R** **U**



S580

**D** **R** **U**



S722

**D** **R** **O**



SDE

**D** **R**



SDY3

**D** **R** **O**



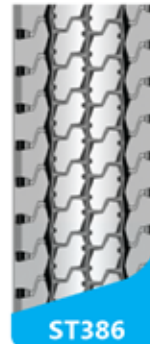
SGP

**D** **W**



SM

**D** **H** **R**



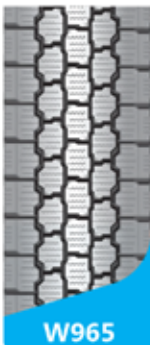
ST386

**D** **H** **R**



SUN32

**D** **A** **R** **O**



W965

**D** **W**



CB

**D** **A** **O**



CXG

**D** **A** **O**



LL/NLL

**D** **O**



LT

**O**



RB

**D** **O**



RL

**D** **O**



SHF

**D** **A** **O**



SR45

**O**



TK

**D** **O**



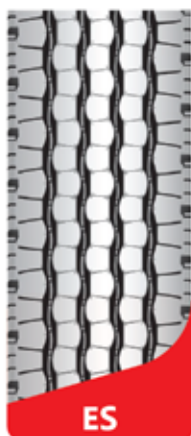
WHL

**R** **U**

**TYRE POSITION** **D** Drive **T** Trailer **A** All Position **APPLICATION** **H** Highway **R** Regional **O** Off Road **U** Urban **W** Winter

Allow ± 3% commercial tolerance. All technical specifications are approximate only.

# PRECURED TREAD PATTERN



ES

Pattern	Base Width (mm)	Tread Depth (mm)	Length (mm)	Weight (kg/m)
ES-195	195	14.0	3190	3.26
ES-203	203	15.0	3220	3.26
ES-210.1	210	15.0	3280	3.41
ES-216.3	216	15.0	3740	3.84
ES-230	230	16.0	3270	4.19
ES-245.3	245	16.0	3310	4.53
ES-245.4	245	16.0	3820	4.50

- Longitudinal ribs with closed shoulder.
- For all wheel positions of touring coaches, city and articulate buses, trucks, trailers and semi-trailers.
- Recommended for vehicles with a high centre of gravity.

- Good traction on wet and dry roads due to deep sipes.
- Low noise & smooth running.
- High mileage performance.

D T A R



JH

Pattern	Base Width (mm)	Tread Depth (mm)	Length (mm)	Weight (kg/m)
JH-160	160	15.0	2710	2.58
JH-185	185	15.0	2800	3.29
JH-205.1	205	16.0	3320	4.55
JH-213	213	17.0	3390	4.42

- Longitudinal tread with continuous round shoulder.
- For use on trailer, semi-trailer and trailing axle.
- Directionally stable due to large contact area.

- Smooth running.
- Fuel saving. Low rolling resistance.

T H R



RH

Pattern	Base Width (mm)	Tread Depth (mm)	Length (mm)	Weight (kg/m)
RH-142	142	13.0	2440	2.21
RH-142-7M	142	13.0	6880	2.12
RH-152	152	12.0	2440	2.09
RH-162	162	12.0	2440	2.23
RH-170	170	12.0	2610	2.34

- Longitudinal treads with continuous round shoulder.
- For trailer, semi-trailer and trailing axle.
- Directionally stable due to large contact area.
- Smooth running.
- Fuel saving, low rolling resistance.

D T H





RP

Pattern	Base Width (mm)	Tread Depth (mm)	Length (mm)	Weight (kg/m)
RP-194	194	15.0	3200	2.92
RP-194.2	194	15.0	2480	2.86
RP-203	203	16.0	3090	3.59
RP-203.1	203	16.0	3250	3.98
RP-210	210	16.0	3240	3.50
RP-220.3	220	16.0	3250	4.06
RP-220.4	220	16.0	3750	3.65
RP-230.3	230	16.0	3250	4.00
RP-230.1H	230	18.0	3450	4.66
RP-240.1	240	17.0	3080	4.10
RP-240H	240	18.0	3440	4.91
RP-250	250	18.0	3250	4.89
RP-250.4	250	18.0	3770	4.86
RP-260.2	260	17.5	3080	5.58
RP-260.4	260	17.5	3750	5.49
RP-265	265	18.0	3260	5.18

- Longitudinal ribs with round shoulder.
- For use on trailer, semi-trailer and trailing axle.
- For short and long haul use.
- High resistance to lateral shearing forces due to rounded shoulders.
- Low stress on casing due to minimal tread movement and cool running.

**DTAHRU**

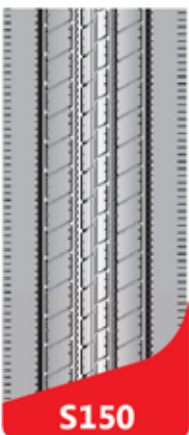


S10

Pattern	Base Width (mm)	Tread Depth (mm)	Length (mm)	Weight (kg/m)
S10-194	194	13.0	3180	2.99
S10-203	203	14.0	3240	3.15

- Longitudinal ribs pattern with open shoulder.
- For drive axle of city buses and trucks.
- All round pattern for construction site vehicles.
- For short and long range use.
- Good traction on paved road and off road.
- Resistant to wear and cuts due to specially formulated compound.
- Good self cleaning due to open tread design.
- Directionally stable.

**DRU**



S150

Pattern	Base Width (mm)	Tread Depth (mm)	Length (mm)	Weight (kg/m)
S150-210	210	15.0	3190	3.76
S150-220	220	15.0	3190	3.92
S150-230	230	15.0	3220	3.88
S150-240A	240	17.0	3060	4.64
S150-240A-N	240	17.5	2990	4.84
S150-250	250	16.0	3250	4.68
S150-260	260	16.0	3270	4.80

- Exceptional mileage.
- Resistance to irregular wear.
- Represents exceptional value for fleets with effective maintenance practices.

**TH**

# PRECURED TREAD PATTERN

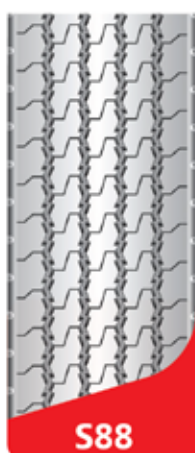


S85

Pattern	Base Width (mm)	Tread Depth (mm)	Length (mm)	Weight (kg/m)
S85-210	210	16.0	3200	3.65
S85-220	220	16.0	3250	3.72
S85-230	230	16.0	3250	4.03

- Solid block type tread with open shoulder.
- For drive axle of trucks.
- For long haul and short haul.
- All season tread pattern with superior traction and braking on wet and slippery roads.
- Good transmission.
- Extreme good running properties due to extra large contact area and specifically designed formula.

DTA H



S88

Pattern	Base Width (mm)	Tread Depth (mm)	Length (mm)	Weight (kg/m)
S88-203	203	17.0	3350	3.55
S88-215	215	17.0	3310	3.95
S88-230	230	17.0	3370	4.18
S88-245N	245	17.0	3200	5.18

- Ribbed tread with continuous round shoulder.
- For all wheel positions of tour bus.
- For trailer, semi-trailer and trailing axle and for all wheel positions of touring coaches, city and articulate buses, trucks and light trucks, vans and mini-buses.
- For short and long range use.
- Good traction on wet and dry roads due to distinct sipes.
- Grooves designed to resist stone penetration and casing damage.

DTA HR



SH

Pattern	Base Width (mm)	Tread Depth (mm)	Length (mm)	Weight (kg/m)
SH-130	130	13.0	2550	1.88
SH-140	140	13.0	2450	2.16
SH-152.1	152	14.0	2450	2.37
SH-180	180	15.0	2570	3.04
SH-194	194	15.0	3360	3.24
SH-194-11M-C	194	15.0	10320	3.12
SH-205	205	15.5	3270	3.61
SH-210	210	15.0	3240	3.48
SH-210-11M-C	210	15.0	10330	3.50
SH-210.1C	220	15.0	3150	4.03
SH-210.2C	220	15.0	3760	3.94
SH-220-11M-C	220	15.0	10320	3.88
SH-225	225	15.0	3750	3.85
SH-225.1	225	15.0	3210	3.89
SH-230C	230	15.0	3440	4.13
SH-240C	240	15.0	3440	4.27
SH-240.5C	240	15.0	3170	4.19
SH-250N	250	16.0	3300	4.45

- Ribbed tread with continuous round shoulder.
- For all wheel positions of tour coach, city and articulate buses, trucks, light trucks, vans and mini-buses.
- For trailer, semi-trailer and trailing axle.
- Smooth running - semi trailer.

DTA HR

TYRE POSITION **D** Drive **T** Trailer **A** All Position APPLICATION **H** Highway **R** Regional **O** Off Road **U** Urban **W** Winter





Pattern	Base Width (mm)	Tread Depth (mm)	Length (mm)	Weight (kg/m)
SQH-207.3	207	13.0	3180	3.14

- Ribbed pattern with continuous round shoulder.
- For used on trailer, semi-trailer and trailing axle and all wheel positions of touring coaches, city and articulate buses, trucks, light trucks, vans and mini-buses.
- For short and long range use.
- Lighter tread.
- Smooth running and high mileage.

**D T A H R U**



Pattern	Base Width (mm)	Tread Depth (mm)	Length (mm)	Weight (kg/m)
SQH-140.3	140	11.0	2190	2.00
SQH-152N	152	11.5	2440	2.03
SQH-160	160	13.0	2530	2.53
SQH-179R.3	179	13.0	3120	2.69
SQH-194.1	194	13.0	3310	3.02
SQH-194-11M	194	13.0	10550	3.02
SQH-210.1	210	14.0	3170	3.50
SQH-216.1	216	14.0	3180	3.52

- Ribbed pattern with continuous round shoulder.
- For used on trailer, semi-trailer and trailing axle and all wheel positions of touring coaches, city and articulate buses, trucks, light trucks, vans and mini-buses.
- For short and long range use.
- Lighter tread.
- Smooth running and high mileage.
- Suitable for bias tyre.

**D T A H R U**

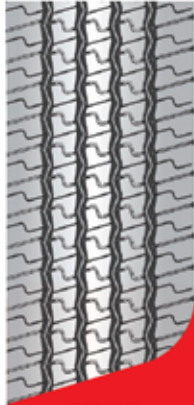


Pattern	Base Width (mm)	Tread Depth (mm)	Length (mm)	Weight (kg/m)
SR34-194.6	194	15.0	3330	3.12
S34-210	210	15.0	3170	3.50
SR34-216	216	17.0	3250	3.93
SR34-220	220	15.0	3240	3.62
SR34-230.1	230	17.0	3200	4.13
SR34-240	240	15.0	3230	4.24
SR34-245.1	245	17.0	3260	4.38
SR34-250	250	15.0	3250	4.65

- Longitude ribs with round shoulder.
- For use on drive axle of city buses and trucks.
- For use on trailer, semi-trailer and trailing axles.
- For all wheel positions of construction vehicles.
- All round performance.
- Good transmission for traction forces on pave roads and off roads.
- Good self cleaning due to open tread design.
- High mileage.
- Directional stable.
- Suitable for use on low noise vehicles.

**D A R U**

PRECURED TREAD PATTERN

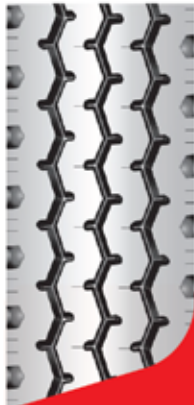


SZE2

Pattern	Base Width (mm)	Tread Depth (mm)	Length (mm)	Weight (kg/m)
SZE2-240-11M	240	15.0	10050	4.28
SZE2-250-11M	250	15.0	10050	4.48
SZE2-260-11M	260	15.0	10050	4.71
SZE2-270-11M	270	15.0	10050	4.84

- Solid block type tread with open shoulder.
- For drive axle of trucks.
- For long haul and short haul.
- All season tread pattern with superior traction and braking on wet and slippery road.
- Good transmission.
- Extreme good running properties due to extra large contact area and specifically designed format.

DT H



XZY

Pattern	Base Width (mm)	Tread Depth (mm)	Length (mm)	Weight (kg/m)
XZY-194	194	15.0	3170	3.47
XZY-203.2	203	15.0	3220	3.56
XZY-210	210	15.0	3750	3.79
XZY-210.1	210	15.0	3250	3.75
XZY-215.4N	215	15.5	3270	3.94
XZY-230.1	230	15.0	3790	4.20
XZY-230.4	230	15.0	3300	4.20
XZY-245N	245	15.0	3360	4.67
XZY-260	260	15.0	3290	4.71

- Longitudinal ribs with round shoulder.
- For use on drive axle of city buses and trucks.
- For use on trailer, semi-trailer and trailing axles.
- For all wheel positions of construction vehicles.
- All round performance.
- Good transmission for traction forces on paved roads and off roads.
- Good self-cleaning due to open tread design.
- High mileage performance.
- Directional stable.

DT HRU



DS

Pattern	Base Width (mm)	Tread Depth (mm)	Length (mm)	Weight (kg/m)
DS-142	142	13.0	2440	2.05
DS-152N	152	13.0	2450	2.24
DS-162	162	13.0	2560	2.28
DS-162-7M	162	13.0	6880	2.32
DS-195	195	16.0	3130	3.26

- Longitudinal block tyre with open shoulders.
- For drive axle of city buses and trucks.
- All season tread.
- Straight-running stability due to longitudinal tread bars.
- Smooth running.
- Good traction properties.
- Good running properties.

DA O





KT

Pattern	Base Width (mm)	Tread Depth (mm)	Length (mm)	Weight (kg/m)
KT-180	180	16.0	3075	2.93
KT-194	194	16.0	3070	3.30
KT-194-11M	194	16.0	10620	3.30
KT-203	203	16.0	3210	3.49
KT-208	208	16.0	3160	3.00
KT-208.1	208	16.0	3220	3.07
KT-216	216	16.0	3220	3.78
KT-216.2	216	16.0	3750	3.78
KT-230N	230	17.0	3250	4.15
KT-230.2N	230	17.0	2660	4.17
KT-245	245	16.0	3240	4.01
KT-245.1	245	16.0	3070	4.10

- Longitudinal rib in center with shoulder block.
- For drive axle of construction & special vehicles.
- Good transmission of traction forces on wet and dry road as well for off-road.
- Good self cleaning as a result of open tread.
- Very good straight running stability.

D R



M810

Pattern	Base Width (mm)	Tread Depth (mm)	Length (mm)	Weight (kg/m)
M810-168.1	168	16.0	2825	2.90
M810-185	185	17.0	2590	3.12

- All position diagonal block pattern with excellent traction and self cleaning ability.
- A special, cut-resistant compound makes this pattern particularly suited for use on vehicles in more severe operations, such as waste disposal and logging.
- Diagonal blocks – good traction.
- Open tread design – very good self cleaning ability.
- Cut resistant compound – increased resistance to cutting and chipping.

D A R O



M810E

Pattern	Base Width (mm)	Tread Depth (mm)	Length (mm)	Weight (kg/m)
M810E-160.1	160	16.5	2490	2.94

- All position diagonal block pattern with excellent traction and self cleaning ability.
- A special, cut-resistant compound makes this pattern particularly suited for use on vehicles in more severe operations, such as waste disposal and logging.
- Diagonal blocks – good traction.
- Open tread design – very good self cleaning ability.
- Cut resistant compound – increased resistance to cutting and chipping.

D A R O

# PRECURED TREAD PATTERN



**M880**

Pattern	Base Width (mm)	Tread Depth (mm)	Length (mm)	Weight (kg/m)
M880-215.2	215	17.0	3150	4.16
M880-240.1	240	17.0	3120	4.35

- All position diagonal block pattern with excellent traction and self cleaning ability.
- A special, cut-resistant compound makes this pattern particularly suited for use on vehicles in more severe operations, such as waste disposal and logging.
- Diagonal blocks - good traction.
- Open tread design - very good self cleaning ability.
- Cut resistant compound - increased resistance to cutting and chipping.

**D R O**



**MIX757**

Pattern	Base Width (mm)	Tread Depth (mm)	Length (mm)	Weight (kg/m)
MIX757-212	210	16.0	3350	3.55
MIX757-220	220	16.0	3760	3.99
MIX757-230	230	16.0	3740	4.06
MIX757-240	240	16.0	3250	4.12
MIX757-245	245	16.0	3350	4.00

- Longitudinal block-type tread with closed shoulders.
- For drive axle of trucks.
- For short-range use, especially on construction sites.
- Directionally stable due to closed shoulders.
- Very good self cleaning as a result of distinct conical profile blocks.
- Good transmission of traction forces due to solid blocks in centre of tread.

**D R**



**S119**

Pattern	Base Width (mm)	Tread Depth (mm)	Length (mm)	Weight (kg/m)
S119-240.1	240	19.0	3250	5.05
S119-250	250	20.0	3290	5.47
S119-260	260	20.0	3290	5.62

- Solid block type tread with open shoulder.
- For drive axle of trucks.
- For long haul and short haul.
- All season tread pattern with superior traction and braking on wet and slippery roads.
- Good transmission.
- Extreme good running properties due to extra large contact area and specifically designed formula.

**D H R**



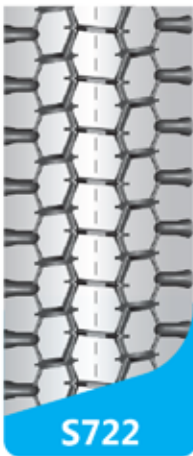


S33

Pattern	Base Width (mm)	Tread Depth (mm)	Length (mm)	Weight (kg/m)
S33-240	240	18.5	3140	5.19

- Design as all position tyre for on/off road surface.
- Provide overall excellent performance and durability.
- Wider tread and complex groove angles offer enhanced tyre life with superior resistance to irregular wear.

D A R U



S722

Pattern	Base Width (mm)	Tread Depth (mm)	Length (mm)	Weight (kg/m)
S722-230	230	16.0	3280	4.24
S722-242	242	17.0	3300	4.48
S722-252	252	17.0	3240	4.72
S722-265	265	17.0	3300	5.33

- Large block tread.
- Deep traction drive pattern.
- Resistant to irregular wear.
- Resist stone penetration and retention.

D R O



SDE

Pattern	Base Width (mm)	Tread Depth (mm)	Length (mm)	Weight (kg/m)
SDE-220	220	15.0	3770	3.61
SDE-220.1	220	15.0	3240	3.60
SDE-225	225	15.0	3740	3.88
SDE-225.1	225	15.0	3250	3.90
SDE-230	230	16.0	3280	3.96
SDE-230.1	230	16.0	3740	3.95
SDE-230H	230	18.5	3270	4.62
SDE-230.1H	230	18.5	3150	4.71
SDE-240	240	19.0	3330	5.20
SDE-245	245	18.0	3320	3.98
SDE-250.1	250	19.0	3290	5.17
SDE-260	260	18.5	3300	4.88
SDE-270	270	19.0	3360	5.62

- Solid block type tread with open shoulder.
- For drive axle of trucks.
- For long haul and short haul.
- All season tread pattern with superior traction and braking on wet and slippery roads.
- Good transmission
- Extreme good running properties due to extra large contact area and specifically designed formula.

D R

# PRECURED TREAD PATTERN



Pattern	Base Width (mm)	Tread Depth (mm)	Length (mm)	Weight (kg/m)
SDY3-240N	240	19.0	3380	5.06
SDY3-250	250	19.0	3360	5.00
SDY3-260.1	260	19.0	3320	5.36

- Good handling and high haulage in dry and wet condition.
- High lateral skid prevention capability, good handling stability.
- High comfort on travel, low noise emission, low fuel consumption.
- Tread design provide excellent high-speed performance and great traction.
- Good mileage performance.

**D R O**



Pattern	Base Width (mm)	Tread Depth (mm)	Length (mm)	Weight (kg/m)
SGP-150-10M	150	12.0	10260	1.92
SGP-160-10M	160	12.0	10200	2.11
SGP-170-10M	170	12.0	10230	2.27
SGP-180-10M	180	13.0	10170	2.56
SGP-190-10M	190	14.5	10080	2.82

- Block pattern with offset shoulder block.
- Good self-cleaning with open shoulder block.
- Good traction on wet and dry surfaces.
- All-position tyre for short and long-range operations.
- Tough compound for all kinds of on/off roads.

**D W**



Pattern	Base Width (mm)	Tread Depth (mm)	Length (mm)	Weight (kg/m)
SM-205	205	11.0	3220	2.95
SM-215	215	11.0	3220	3.11

- Longitudinal ribs with sipes.
- Good transmission of traction forces due to distinctive sipes.
- Fuel saving, low rolling resistance.

**D H R**





ST386

Pattern	Base Width (mm)	Tread Depth (mm)	Length (mm)	Weight (kg/m)
ST386-215	215	14.0	3720	3.90
ST386-225	225	14.0	3720	4.03
ST386-230	230	14.0	3340	3.98
ST386-230.1	230	14.0	3750	4.05

- Square, open, staggered shoulder tread blocks.
- Helps increase side stability with superb traction in mud & snow.
- Extra deep treading.
- Minimal stone retention.
- Open staggered shoulders and large notching.
- Self-cleaning traction in muddy terrain.

D H R



SUN32

Pattern	Base Width (mm)	Tread Depth (mm)	Length (mm)	Weight (kg/m)
SUN32-215	215	16.0	3220	3.60
SUN32-230	230	16.0	3250	3.66
SUN32-240.2	240	16.0	3230	3.96
SUN32-250	250	16.0	3230	4.24

- Block pattern, closed, rounded shoulder.
- For drive axle of trucks, semi-trailer, trailer and trailing axles.
- Well suited for construction-site operation.
- For short and long range operations.
- High resistance to lateral shearing forces due to rounded shoulders.
- Directionally stable due to closed shoulder.
- Good self cleaning due to open tread design.
- Good transmission of traction forces due to solid blocks in centre of tread.

D A R O



CB

Pattern	Base Width (mm)	Tread Depth (mm)	Length (mm)	Weight (kg/m)
CB-152	152	11.0	2380	2.16
CB-194	194	14.0	3250	3.35
CB-203	203	15.0	3230	3.80
CB-207	207	17.0	3255	3.96
CB-210	210	15.0	3310	3.92
CB-220	220	15.0	3470	4.15
CB-230.2	230	15.0	3190	4.35
CB-250	250	15.0	3470	4.80

- Robust tread with large contact area.
- For drive axle of construction and special purpose vehicles in heavy duty use.
- Also for forklift and industrial vehicles.
- Good transmission of traction forces particularly on unpaved surfaces.
- Very good self cleaning due to open shoulder design.
- Resistant to tears and cuts due to specifically formulated compound.
- Very well suited for high propulsion power.
- Good running properties due to open tread design.

D A O

# PRECURED TREAD PATTERN



Pattern	Base Width (mm)	Tread Depth (mm)	Length (mm)	Weight (kg/m)
CXG-140N	140	15.5	2450	2.37
CXG-150N	150	15.5	2360	2.50
CXG-162	162	15.0	2540	2.44
CXG-170	170	15.5	2530	2.73
CXG-180	180	15.5	2480	2.94

- Speciality tread for forklift tyres.
- For light trucks, vans and buses.



Pattern	Base Width (mm)	Tread Depth (mm)	Length (mm)	Weight (kg/m)
LL-140	140	13.5	2450	2.22
LL-160	160	14.0	2450	2.51
LL-170	170	14.0	2480	2.66
LL-205.3	205	16.0	2600	3.80
LL-215.1	215	18.0	3160	4.20
LL-215H	215	20.0	3330	4.65
LL-230	230	16.0	3330	4.07

- Transverse solid block tread.
- For drive axle of construction and special purpose vehicles.
- Good transmission of traction forces particularly on unpaved surface.

- Very good self cleaning as a result of open tread design.
- Resistant to cuts and wear and tear due to specially formulated compound.



Pattern	Base Width (mm)	Tread Depth (mm)	Length (mm)	Weight (kg/m)
NLL-150N	150	14.5	2480	2.26
NLL-180.4	180	15.0	2400	2.79
NLL-180-7M	180	15.0	6420	2.87
NLL-195N	195	15.0	3260	3.20
NLL-195.2N	195	15.0	3190	3.17

- Transverse solid block tread.
- For drive axle of construction and special purpose vehicles.
- Good transmission of traction forces particularly on unpaved surface.

- Very good self cleaning as a result of open tread design.
- Resistant to cuts and wear and tear due to specially formulated compound.







LT

Pattern	Base Width (mm)	Tread Depth (mm)	Length (mm)	Weight (kg/m)
LT-195N	195	23.0	3150	4.57
LT-205.1	205	25.0	3230	4.74
LT-205.2	205	25.0	3770	4.93
LT-220.3	220	25.0	3210	5.16
LT-220.4	220	25.0	3740	5.16
LT-240	240	24.0	3320	5.63

- Solid, cross-groove, block type tread.
- Used on drive of construction and special purpose vehicles in heavy duty use.
- Specially formulated formula, helps to prevent cuts and damage to casing.
- Good self cleaning due to open shoulder design.
- Good running properties due to extra tread depth.



RB

Pattern	Base Width (mm)	Tread Depth (mm)	Length (mm)	Weight (kg/m)
RB-200.1	200	18.5	2440	3.98
RB-215N	215	20.0	3250	4.80
RB-220	220	21.0	3230	4.77
RB-230N	230	22.0	3340	5.09
RB-242N	242	21.5	3250	5.35
RB-252N	252	21.5	3310	5.68
RB-260N	260	23.0	3380	6.57

- Solid block tread.
- For drive axle of construction and special purpose vehicles on heavy duty use.
- Only suitable for low speeds and on normal roads.
- Very good self cleaning as a result of open tread design.
- Anti chipping and anti cutting characteristic.
- High mileage performance in all application because of deep tread and large contact area.
- Good transmission of traction forces, particularly on unpaved surfaces.



SHF

Pattern	Base Width (mm)	Tread Depth (mm)	Length (mm)	Weight (kg/m)
SHF-240-11M	240	19.0	10050	5.11
SHF-250-11M	250	19.0	10050	5.32
SHF-260-11M	260	19.0	10050	5.61

- Heavy duty lateral block with open shoulder.
- For application on drive axle of construction and special purpose vehicles.
- For short and long range operations.
- Suitable for all weather use.
- Good transmission of traction forces on wet and dry roads, particularly in unpaved roads.
- Good self cleaning as a result of open shoulder.
- High mileage performance.



# PRECURED TREAD PATTERN



Pattern	Base Width (mm)	Tread Depth (mm)	Length (mm)	Weight (kg/m)
SR45-318	318	32.0	4180	10.4

- Solid cross groove, block type tread.
- Good self cleaning due to open shoulder design.
- Good running properties due to extra tread depth.
- Better traction due to L-shape pattern.



Pattern	Base Width (mm)	Tread Depth (mm)	Length (mm)	Weight (kg/m)
TK-195	195	18.0	3160	3.38
TK-203	203	19.0	3290	4.29
TK-210	210	19.0	3240	4.23
TK-215N	215	19.0	3200	4.56
TK-230.3N	230	21.0	3310	4.98
TK-254	254	19.0	3700	5.46
TK-254.2	254	19.0	3400	5.38

- Solid cross groove, block type tread.
- For drive axle of construction and special purpose vehicles in heavy duty use.
- Specially design for use in logging industry.
- Specially adapted compound for anti cutting and anti chipping.
- Good transmission of traction forces, particularly on unpaved surface.
- Very good self cleaning due to open shoulder.
- Superbly suited for high propulsion power.



Pattern	Base Width (mm)	Tread Depth (mm)	Length (mm)	Weight (kg/m)
WHL-165	165	16.0	2610	2.87
WHL-203.1	203	20.0	3405	4.26
WHL-215.3	215	20.0	3110	4.53
WHL-230	230	22.0	3290	5.32
WHL-245	245	22.0	3280	5.18

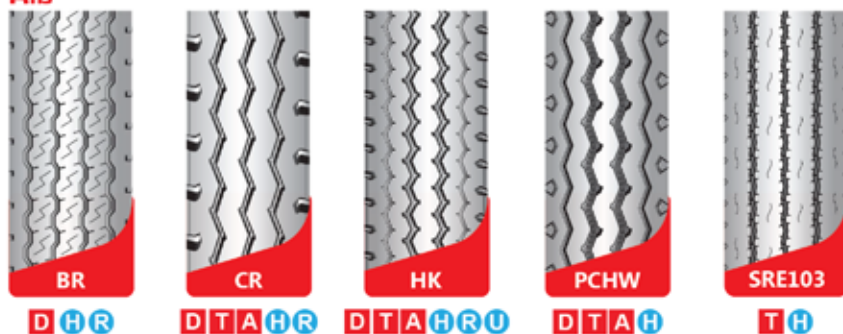
- Heavy duty lateral block with open shoulder.
- For application on drive axle of construction and special purpose vehicles.
- For short and long range operations.
- Suitable for all weather use.
- Good transmission of traction forces on wet and dry roads, particularly in unpaved roads.
- Good self cleaning as a result of open shoulder.
- High mileage performance.



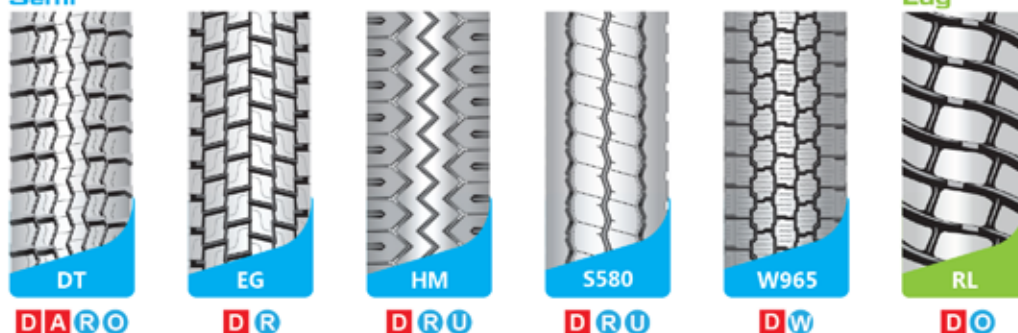


## PRECURED TREAD PATTERN

### Rib



### Semi



Pattern	Base Width (mm)	Tread Depth (mm)	Length (mm)	Weight (kg/m)
BR-194	194	12.0	3270	2.72
BR-203	203	11.0	3270	2.84
CR-180	180	14.0	3145	2.73
HK-199	199	15.0	3220	3.17
HK-206	206	15.0	3220	3.22
PCHW-180	180	11.0	3090	2.40
PCHW-195.1	195	11.0	3195	2.60
PCHW-205.1	205	11.0	3260	2.73
SRE103-205	205	11.0	3200	3.10
SRE103-215	215	11.0	3230	3.25
DT-210	210	16.5	3300	4.36
DT-221	221	17.0	3390	4.33
DT-221.1	221	17.0	3270	4.22
DT-221.2	221	17.0	3720	4.20
DT-230	230	17.0	3280	4.70
DT-230.1	230	17.0	3750	4.74
EG-230#	230	22.0	3280	5.27
EG-245	245	22.5	3290	5.78
HM-196	196	15.5	3190	3.73
S580-215	215	16.0	3700	4.05
S580-220	220	16.0	3700	4.08
S580-230	230	16.0	3750	4.29
S580-250	250	16.0	3730	4.77
W965-170	170	14.0	2520	2.70
W965-180	180	14.0	2520	2.90
RL-242	242	24.0	3150	5.92
RL-250.1	250	24.0	3300	6.03

TYRE POSITION **D** Drive **T** Trailer **A** All Position APPLICATION **H** Highway **R** Regional **O** Off Road **U** Urban **W** Winter

Allow ± 3% commercial tolerance. All technical specifications are approximate only.

# TECHNICAL INFORMATION

14 INCH TYRES											
Tyre Dimension		Buffing Radius		Buffing Circ.	Rim-Width		Tread-Width		Inner Env.	Outer Env.	VP*
		mm	inch	mm	mm	inch	mm	mm	size	size	size
165	R14	410	16	1885	115	4.5	120	130	76	3 P	LT
165/70	R14	410	16	1702	130	5	130	140	76	3 P	LT
165/75	R14	410	16	1830	115	4.5	120	140			LT
175	R14	410	16	1921	130	5	120	140	06	3 P	LT
175/75	R14	410	16	1873	130	5	120	140			LT
185	R14	410	16	1970	140	5.5	130	160	06 A	3 P	LT
185/75	R14	410	16	1921	130	5	130	150			LT
195	R14	410	16	2018	140	5.5	140	160	06 A	5 P	LT
195/75	R14	410	16	1963	140	5.5	140	160			LT
205	R14	460	18	2079	150	6	150	170	06 A	5 P	LT
205/75	R14	460	18	2012	140	5.5	150	170			LT
215	R14	460	18	2121	150	6	160	180	06 A	4 P	LT
215/75	R14	460	18	2054	150	6	160	180			LT
6.50	R14	350	14	1939	130	5	120	130	06	3 P	LT
6.70	R14	350	14	2085	130	5	120	140	06	3 P	LT
7.00	R14	350	14	2218	140	5.5	130	150	06	3 P	LT
7.50	R14	350	14	2288	150	6	130	150			LT

15 INCH TYRES											
175/70	R15	410	16	1900	130	5	130	140			LT
185	R15	460	18	2024	140	5.5	130	150	75	5 P	LT
185/70	R15	410	16	1942	140	5.5	130	150			LT
195	R15	460	18	2115	140	5.5	140	160	07	4 P	LT
195/70	R15	460	18	1985	140	5.5	150	160			LT
205	R15	510	20	2148	150	6	150	170	07		LT
205/70	R15	460	18	2027	140	5.5	150	170			LT
205/80	R15	510	20	2148	150	6	170	180			LT
215	R15	510	20	2197	150	6	160	180	07	4 P	LT
215/65	R15	510	20	2003	150	6	160	180			LT
215/70	R15	510	20	2069	150	6	160	180			LT
215/75	R15	510	20	2133	150	6	160	180		4 P	LT
225/75	R15	550	22	2179	150	6	170	190	07	6	LT
235/75	R15	550	22	2224	180	7	170	190	10	4 P	LT
255/75	R15	660	26	2312	180	7	180	210	10		LT
30x9.50	R15	550	22	2273	165	6.5	170	190	09		LT
31x10.50	R15	660	26	2348	180	7	180	210	10		LT
32x11.50	R15	660	26	2427	200	8	210	240	10		LT
33x12.50	R15	720	28	2503	200	8	220	240	10		LT
6.70	R15	410	16	2157	130	5	120	140	06		LT
7.00	R15	350	14	2279	130	5	120	140	06	4 P	LT
7.50	R15	350	14	2339	150	6	140	160	10	6	LT
8.25	R15	410	16	2533	165	6.5	140	170	09	6	LT
10.00	R15	510	20	2782	190	7.5	180	210	10	6	LT

16 INCH TYRES											
175/75	R16	410	16	2024	130	5	120	140		5 P	LT
185/75	R16	460	18	2073	130	5	130	150			LT
195	R16	460	18	2169	140	5.5	140	160	11	5 P	LT
195/75	R16	460	18	2115	140	5.5	140	160	11	6	LT
205	R16	460	18	2230	150	6	150	170	11	6	LT
205/75	R16	460	18	2163	140	5.5	150	170	11	6	LT
215	R16	510	20	2273	150	6	160	180	10 A	6	LT
215/75	R16	510	20	2206	150	6	160	180		6	LT
215/80	R16	510	20	2273	150	6	160	180			LT
215/85	R16	460	18	2339	150	6	160	180			LT
225/75	R16	510	20	2254	150	6	170	190		6	LT
235/85	R16	510	20	2442	165	6.5	170	190			LT
245/75	R16	550	22	2345	165	6.5	180	200			LT
6.00	R16	300	12	2206	115	4.5	120	130	16	5 P	LT
6.50	R16	350	14	2248	115	4.5	120	130		5 P	LT
6.70	R16	350	14	2269	130	5	120	140			LT
7.00	R16	350	14	2357	140	5.5	130	160	11	6	LT
7.50	R16	350	14	2430	150	6	130	150	11	6	LT
8.25	R16	410	16	2606	165	6.5	150	170		6	LT
9.00	R16	510	20	2763	165	6.5	170	190			LT
11.00	R16	550	22	2879	200	8	200	200			LT-T

## TECHNICAL INFORMATION

16,5 INCH TYRES											
Tyre Dimension		Buffing Radius		Buffing Circ.	Rim-Width		Tread-Width		Inner Env.	Outer Env.	VP*
		mm	inch	mm	mm	inch	mm	mm	size	size	size
8	R16.5	510	20	2182	135	5.25	140	160			LT-T
8.75	R16.5	550	22	2266	150	6	160	180			LT-T
9.50	R16.5	660	26	2351	150	6	170	190			LT-T
10.00	R16.5	660	26	2309	170	6.75	190	240			LT-T
12.00	R16.5	660	26	2479	210	8.25	220	280			TSS
17,5 INCH TYRES											
205/75	R17.5	550	22	2151	150	6	150	170			LT
205/75	R17.5	550	22	2282	150	6	150	190	12 A	6	LT
215/75	R17.5	660	26	2324	150	6	150	190	12 A	6	LT
225/75	R17.5	660	26	2372	170	6.75	170	200	12 A	6	LT
235/75	R17.5	660	26	2415	170	6.75	170	210	13 A	6	LT-T
245/70	R17.5	720	28	2410	190	7.5	190	210	13 A	6	LT-T
245/75	R17.5	720	28	2550	190	7.5	190	220	13 A	6	LT-T
265/70	R17.5	720	28	2460	190	7.5	210	230	12 A	6	LT-T
7	R17.5	550	22	2279	140	5.5	120	140			LT
8	R17.5	550	22	2376	150	6	140	160	12 A	4 P	LT
8.5	R17.5	550	22	2430	150	6	140	170	12 A	6	LT
9	R17.5	550	22	2501	170	6.75	150	180	13 A	6	LT
9.5	R17.5	550	22	2551	170	6.75	160	190	13 A	6	LT
10	R17.5	550	22	2600	190	7.5	170	190	14	6	LT
19,5 INCH TYRES											
245/70	R19.5	660	26	2542	190	7.5	190	210	15		
265/70	R19.5	720	28	2627	190	7.5	200	230	15	6	LT-T
285/70	R19.5	660	26	2712	210	8.25	210	240	17	5	LT-T
305/70	R19.5	860	34	2797	230	9	230	260	17	5	T
315/70	R19.5	1050	41	2836	230	9	240	270		4	T
385/55	R19.5	1350	53	2820	300	11.75	310	320	67		T
385/65	R19.5	1150	45	3015	300	11.75	270	300			SS
425/55	R19.5	1750	69	2940	330	13	340	360	67		SS
435/50	R19.5	1650	65	2870	350	14	370	390	66	4	SS
445/45	R19.5	1700	67	2638	350	14	390	390	66		SS
445/65	R19.5	1400	55	3251	350	14	330	350	50	2 SS	SS
7	R19.5	410	16	2424	130	5	120	140	18		SS
8	R19.5	460	18	2594	150	6	140	160	21		LT
9	R19.5	460	18	2709	150	6	150	170		5	LT
9.5	R19.5	460	18	2775	170	6.75	170	190		5	LT
18	R19.5	950	37	3251	350	14	330	360	50		LT
20 INCH TYRES											
335/80	R20	720	28	3163	230	9	230	260	23	3	T
365/80	R20	950	37	3309	230	9	260	280			T-SS
395/80	R20	860	34	3454	280	11	300	320			SS
395/85	R20	860	34	3575	280	11	300	320			SS
12/80	R20	720	28	3054	215	8.5	220	240			T
13/80	R20	720	28	3175	230	9	240	260	23	3	T
14/80	R20	860	34	3303	250	10	260	280			T
14.75/80	R20	860	34	3406	250	10	300	350			SS
15.5/80	R20	860	34	3575	250	10	290	310			SS
6.00	R20	300	12	2551	115	4.5	120	130			LT
6.50	R20	350	14	2636	130	5	120	140			LT
6.70	R20	350	14	2666	130	5	120	140	18	5	LT
7.00	R20	410	16	2703	140	5.5	120	140	18	5	LT
7.50	R20	410	16	2812	150	6	130	150	21	5	LT
8.25	R20	410	16	2915	165	6.5	150	180	21	4	LT
9.00	R20	510	20	3085	180	7	170	200	21	4	LT
10.00	R20	550	22	3188	190	7.5	190	220	21	3	LT-T
11.00	R20	610	24	3278	200	8	210	230	23	3/2 SS	T
12.00	R20	660	26	3400	215	8.5	220	250	23		T
13.00	R20	660	26	3563	230	9	240	260	23		T
14.00	R20	1050	41	3751	250	10	300	240			SS

\*Venting Pad



## TECHNICAL INFORMATION

22,5 INCH TYRES											
Tyre Dimension		Buffing Radius		Buffing Circ.	Rim-Width		Tread-Width		Inner Env.	Outer Env.	VP*
		mm	inch		mm	mm	inch	mm	mm	size	
255/70	R22.5	660	26	2818	190	7.5	180	210			LT
275/70	R22.5	860	34	2920	210	8.25	210	260	24	4	T
275/80	R22.5	860	28	3100	210	8.25	210	230	24	4	T
285/62	R22.5	1150	45	2751	230	9	240	260	26		T
295/60	R22.5	1050	41	2788	230	9	240	260	26		T
295/70	R22.5	860	34	2985	230	9	220	250	24	3	T
295/80	R22.5	950	37	3190	230	9	230	250	29	4	T
305/60	R22.5	1150	45	2848	245	9.75	240	280	26		T-SS
305/70	R22.5	950	37	3030	230	9	220	250	29	4	T
315/60	R22.5	1050	41	2890	245	9.75	260	300	26	3	T-SS
315/70	R22.5	1050	41	3072	230	9	230	270	29	4	T
315/75	R22.5	950	37	3163	230	9	230	260	29	3	T
315/80	R22.5	950	37	3280	230	9	230	260	29 A	3	T
350/75	R22.5	950	37	3272	300	11.75	240	260			T
365/70	R22.5	950	37	3285	265	10.5	260	280			T-SS
385/55	R22.5	1450	57	2997	300	11.75	320	340	68	3	SS
385/65	R22.5	1250	49	3248	300	11.75	270	310	30	3/2 SS	T-SS
425/65	R22.5	1350	53	3406	330	13	310	330	50	2 SS	SS
445/65	R22.5	1250	49	3485	355	14	330	360	50	2 SS	SS
445/75	R22.5	1150	45	3765	330	13	330	360			SS
8	R22.5	460	18	2836	150	6	140	160	28	5	LT
9	R22.5	550	22	2939	170	6.75	160	190	28	5	LT
10	R22.5	660	26	3091	190	7.5	180	210	28	4	LT
11	R22.5	720	28	3182	210	8.25	190	230	28	3/4	LT
12	R22.5	720	28	3285	230	9	210	250	29	3	T
13	R22.5	720	28	3406	230	9	230	260	29 A	3	T
15	R22.5	1050	41	3248	300	11.75	270	310	30	2 SS	SS
16.5	R22.5	1050	41	3406	330	13	310	330	50	2 SS	SS
18	R22.5	1150	45	3485	355	14	330	360	50	2 SS	SS
24 INCH TYRES											
295/75	R24	720	28	3145	230	9	220	250			T
295/80	R24	860	34	3315	230	9	220	250			T
305/75	R24	860	34	3272	230	9	220	250			T
315/75	R24	860	34	3315	230	9	230	260			T
11.00	R24	550	22	3581	200	8	190	210			LT-T
12.00	R24	660	26	3715	215	8.5	220	240	51	2 SS	T
13.00	R24	720	28	3942	230	9	230	250			T
14.00	R24	860	34	4140	230	10	310	350	90		SS
25 INCH TYRES											
14.00	R25	860	34	4140	230	10	320	360			SS
385/95	R25	860	34	4140	230	10	320	360			SS

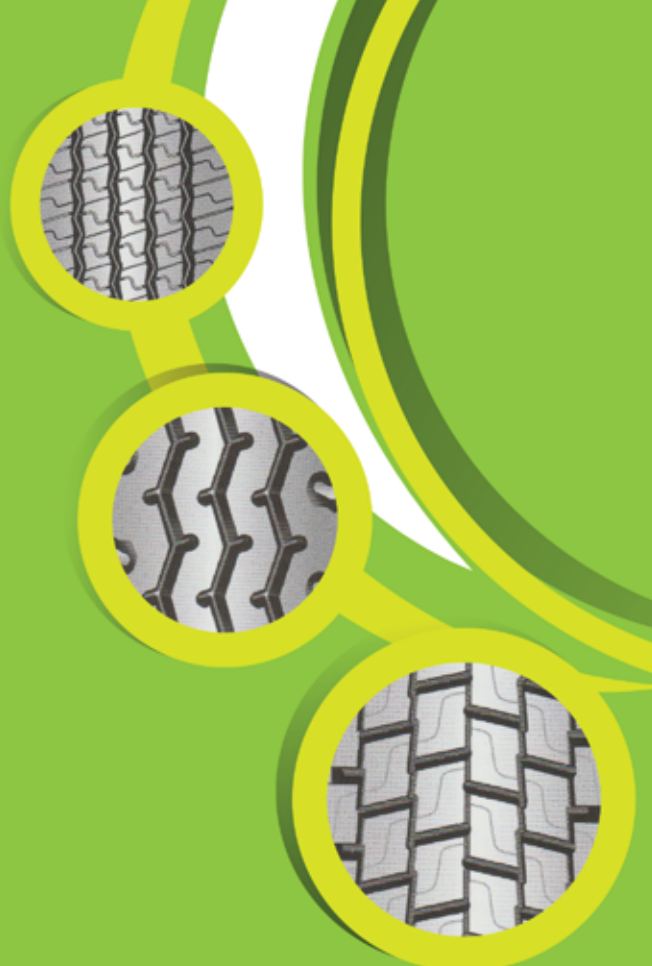
\*Venting Pad

*The specified buffing radii are average values of the market. There can be important variations depending on manufacturer, type of pattern, production site / date of the casing and the applied tread width. **Therefore these values have to be regarded as an indication only.***

# MEASUREMENT TABLE

Tread Width (mm)	Tyre Size	Tread Width (mm)	Tyre Size	Tread Width (mm)	Tyre Size	Tread Width (mm)	Tyre Size	Tread Width (mm)	Tyre Size	Tread Width (mm)	Tyre Size		
<b>120</b>	5.60	R 12	175/75	R 16	215	R 16	9.5	R 19.5	12/80	R 22.5	12/80	R 22.5	
	155	R 14	185/75	R 16	215/75	R 16	10.00	R 20	12.00	R 24	12.00	R 24	
	165	R 14	195	R 16	8.25	R 16	10	R 22.5	305/70	R 19.5	305/70	R 19.5	
	6.00	R 16	195/75	R 16	205/75	R 17.5	255/70	R 22.5	12.00	R 20	12.00	R 20	
	6.00	R 20	7.50	R 16	215/75	R 17.5	R 20	11.00	R 16	12/80	R 20(D20-Pilote)	12/80	R 20(D20-Pilote)
<b>130</b>	6.70	R 13	7.50	R 20	8	R 17.5	10	R 17.5	315/80	R 20	315/80	R 20	
	6.50	R 14	195	R 14	8.5	R 17.5	10	R 17.5	12.00	R 22	12.00	R 22	
	6.70	R 14	195/75	R 14	9	R 17.5	245/75	R 19.5	295/70	R 22.5	295/70	R 22.5	
	6.70	R 15	205	R 14	8	R 19.5	265/75	R 19.5	295/80	R 22.5	295/80	R 22.5	
	6.50	R 16	7.50	R 15	215/75	R 19.5	10.00	R 20	12	R 22.5	12	R 22.5	
	175/175	R 16	8.25	R 15	8.25	R 20	11.00	R 22	13/70	R 22.5	13/70	R 22.5	
	6.50	R 17	195	R 15	8	R 22.5	10	R 22.5	315/75	R 22.5	315/75	R 22.5	
	6.00	R 20	215	R 15	9.00	R 16	11	R 22.5	12.00	R 24	12.00	R 24	
	6.50	R 20	195	R 15	9	R 22.5	11/70	R 22.5	245/75	R 22.5	245/75	R 22.5	
	<b>140</b>	6.70	R 13	195/75	R 16	225/75	R 16	11.00	R 16	245/75	R 19.5	245/75	R 19.5
175		R 14	205	R 16	225/70	R 17.5	265/70	R 19.5	285/70	R 20	285/70	R 20	
185		R 14	205/75	R 16	8.8	R 17.5	285/70	R 19.5	11.00	R 20(E20-Pilote)	11.00	R 20(E20-Pilote)	
185/75		R 14	8.25	R 16	9	R 17.5	11.00	R 20	12.00	R 20	12.00	R 20	
6.70		R 14	205/75	R 17.5	225/75	R 17.5	12.00	R 20	13	R 22.5	13	R 22.5	
185		R 15(17-380)	8	R 17.5	225/70	R 19.5	315/80	R 20	13/75	R 22.5	13/75	R 22.5	
6.70		R 15	215/75	R 17.5	9	R 19.5	11.00	R 22	315/70	R 22.5	315/70	R 22.5	
7.00		R 15	8	R 22.5	9.00	R 20	12.00	R 22	315/80	R 22.5	315/80	R 22.5	
195		R 15	205	R 14	9	R 22.5	275/70	R 22.5	13.00	R 20	13.00	R 20	
175		R 16	215	R 14	9.00	R 16	11	275/80	R 22.5	13/80	R 20	13/80	R 20
175/75		R 16	215	R 15	235/75	R 16	11/70	11	R 22.5	13	R 22.5	13	R 22.5
185		R 16	205	R 16	9.5	R 17.5	12	11/70	R 22.5	13/75	R 22.5	13/75	R 22.5
185/75		R 16	205/75	R 16	225/75	R 17.5	R 17.5	12	R 22.5	14/80	R 20(F20-Pilote)	14/80	R 20(F20-Pilote)
7.00		R 16	215	R 16	235/75	R 17.5	R 19.5	12/70	R 22.5	365/80	R 20	365/80	R 20
7		R 17.5	215/75	R 16	9.5	R 19.5	12/80	305/70	R 22.5	365/80	R 20	365/80	R 20
7	R 19.5	8.25	R 16	9	R 19.5	12.00	12/80	R 24	385/65	R 22.5	385/65	R 22.5	
7.00	R 20	205/75	R 17.5	235/70	R 19.5	285/70	285/70	R 19.5	385/65	R 22.5	385/65	R 22.5	
<b>150</b>	185	R 14	215/75	R 17.5	225/75	R 19.5	12.00	R 20	15	R 22.5	15	R 22.5	
	185/75	R 14	8	R 17.5	9.00	R 20	12.00	R 20	15.5/80	R 20	15.5/80	R 20	
	195	R 14	8	R 19.5	9	R 22.5	315/80	R 22	385/65	R 22.5	385/65	R 22.5	
	195/75	R 14	8.25	R 20	255/75	R 15	12.00	R 22.5	14.00	R 24	14.00	R 24	
	7.00	R 15	8	R 22.5	235/75	R 16	295/70	R 22.5	14.00	R 25	14.00	R 25	
	7.50	R 15	205	R 14	9.5	R 17.5	295/80	R 22.5	385/95	R 25	385/95	R 25	
	8.25	R 15	215	R 14	10	R 17.5	295/80	R 22.5	425/65	R 22.5	425/65	R 22.5	
	185	R 15(17-380)	205	R 15	245/75	R 17.5	12	12/70	16.5	R 22.5	16.5	R 22.5	
	195	R 15	205	R 15	235/70	R 19.5	13/70	13/70					
	185	R 16	205/75	R 16	245/70	R 19.5	305/70	305/70					

Allow ±3% commercial tolerance. All technical specifications are approximate only.



**SUN RUBBER INDUSTRY SDN. BHD.**

(Co.reg.65329-A)

**(A Subsidiary of Sunrich Integrated)**

No. 53 & 54, Senawang Industrial Estate, 70450 Seremban,  
Negeri Sembilan Darul Khusus, West Malaysia.

Tel: +606 - 675 9988 Fax: +606 - 675 9994

Email: [srsales@sunrich-ew.com](mailto:srsales@sunrich-ew.com), [slexport@sunrich-ew.com](mailto:slexport@sunrich-ew.com)

**[www.srit.com.my](http://www.srit.com.my)**